

NORTH PASSAGE PLAT NO. 1

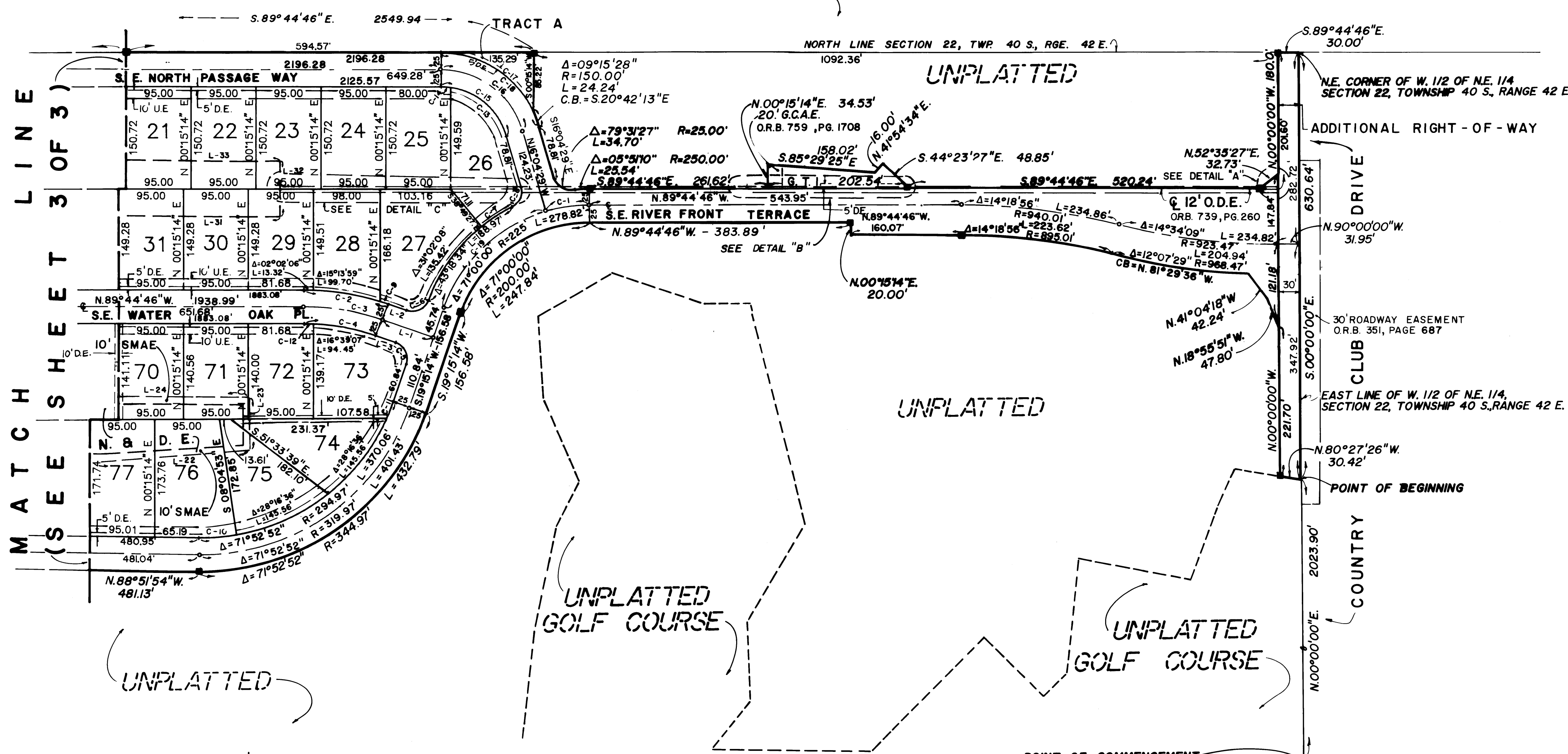
BEING A TRACT OF LAND LYING IN SECTION 22, TOWNSHIP 40 SOUTH, RANGE 42 EAST, MARTIN COUNTY, FLORIDA.

SHEET 2 OF 3 SHEETS



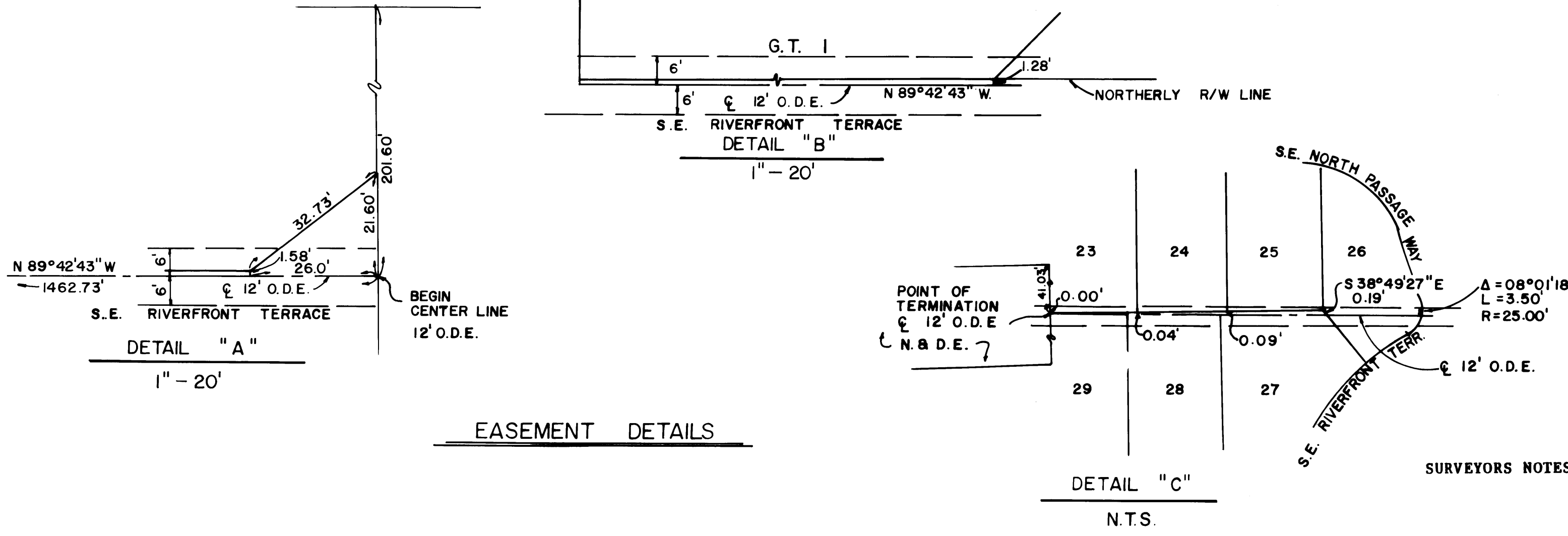
SCALE IN FEET
100 75 50 25 0 50 100
1" = 100'

CLERK'S RECORDING CERTIFICATE
I, MARSHA STILLER, CLERK OF THE CIRCUIT COURT OF MARTIN COUNTY, FLORIDA, HEREBY CERTIFY THAT THIS PLAT WAS FILED FOR RECORD IN PLAT BOOK 11, PAGE 32 MARTIN COUNTY, FLORIDA, PUBLIC RECORDS THIS DAY OF , 1987.
MARSHA STILLER, CLERK OF THE CIRCUIT COURT MARTIN COUNTY, FLORIDA.
FILE NUMBER: BY: DEPUTY CLERK



CURVE TABLE			
NO.	DELTA	RADIUS	LENGTH
C1	16°19'42"	225.00'	64.12'
C2	19°00'00"	375.00'	124.35'
C3	19°00'00"	350.00'	116.06'
C4	19°00'00"	325.00'	107.77'
C5	90°00'00"	25.00'	39.27'
C6	89°06'48"	25.00'	38.88'
C7	12°16'26"	250.00'	53.55'
C8	79°31'27"	25.00'	34.70'
C9	01°43'55"	375.00'	11.33'
C10	10°42'25"	294.97'	55.12'
C11	04°37'14"	294.97'	23.79'
C12	02°20'53"	325.00'	13.32'
C13	64°37'38"	100.00'	112.79'
C14	09°02'39"	100.00'	15.79'
C15	73°40'17"	100.00'	128.58'
C16	73°40'17"	125.00'	160.72'
C17	64°24'45"	150.00'	168.63'
C18	73°40'17"	150.00'	192.87'
C19	54°40'17"	225.00'	214.69'
C20	70°31'44"	25.00'	30.77'
C21	250°31'44"	50.00'	218.62'
C22	101°52'35"	50.00'	88.90'
C23	60°39'58"	50.00'	52.94'
C24	87°59'11"	50.00'	76.78'
C25	17°55'50"	25.00'	7.82'
C26	35°11'59"	25.00'	15.36'
C27	98°18'04"	50.00'	85.78'
C28	50°34'05"	50.00'	44.13'
C29	46°40'14"	50.00'	40.73'
C30	80°25'25"	50.00'	70.18'
C31	42°50'00"	25.00'	18.69'
C32	53°07'48"	25.00'	23.18'
C33	275°57'49"	50.00'	240.82'
C34	34°28'47"	50.00'	30.09'
C35	53°39'25"	50.00'	46.82'
C36	46°51'58"	25.00'	20.45'
C37	25°16'45"	125.00'	55.15'
C38	194°54'42"	50.00'	170.09'
C39	11°16'45"	125.00'	24.61'
C40	00°55'54"	125.00'	2.03'
C41	66°41'53"	100.00'	116.41'
C42	25°41'53"	100.00'	44.85'
C43	41°00'00"	100.00'	71.56'
C44	66°41'53"	75.00'	87.31'
C45	29°18'07"	75.00'	38.36'
C46	01°33'31"	1289.46'	35.07'
C47	01°18'44"	1314.46'	30.11'
C48	01°04'32"	1339.46'	25.14'
C49	00°40'51"	1748.55'	20.78'
C50	06°30'00"	1748.55'	198.37'
C51	06°30'00"	1698.55'	192.69'
C52	02°35'29"	1698.55'	76.83'
C53	10°20'52"	125.00'	22.58'
C54	59°39'16"	50.00'	52.06'
C55	47°07'14"	50.00'	41.12'
C56	67°44'06"	25.00'	29.55'
C57	20°52'09"	25.00'	9.11'

LINE TABLE		
NO.	BEARING	DISTANCE
L1	N 70°44'46" W	79.65'
L2	N 70°44'46" W	29.68'
L3	N 70°44'46" W	29.65'
L4	DELETED	
L5	DELETED	
L6	S 00°15'14" W	25.00'
L7	N 00°15'14" E	5.00'
L8	N 45°56'50" W	40.00'
L9	N 82°43'38" E	38.55'
L10	S 85°03'10" W	72.57'
L11	S 85°03'10" W	72.57'
L12	S 85°03'10" W	72.57'
L13	N 88°33'19" W	80.38'
L14	N 86°37'19" E	72.34'
L15	S 89°50'38" E	100.00'
L16	N 10°56'50" W	43.94'
L17	S 10°56'50" E	43.94'
L18	S 10°56'50" E	43.94'
L19	S 55°16'00" E	26.50'



LEGEND

- = DENOTES PERMANENT REFERENCE MONUMENT (P.R.M.# 4108 SET)
- = DENOTES PERMANENT CONTROL POINT (P.C.P)
- D.E. = DENOTES DRAINAGE EASEMENT
- U.E. = DENOTES UTILITY EASEMENT
- G.C.A.E. = GOLF COURSE ACCESS EASEMENT
- G.T. = GREEN TRACT
- S.M.A.E. = SHORELINE MANAGEMENT AREA EASEMENT
- P.A.E. = PRESERVATION AREA EASEMENT
- O.D.E. = OUTFALL DRAINAGE EASEMENT
- N.B.D.E. = NAVIGATIONAL & DRAINAGE EASEMENT
- = DENOTES PERMANENT REFERENCE MONUMENT (P.R.M.# 3036 EXISTING)
- C-60 = DENOTES CURVE INFORMATION ON CURVE TABLE SHOWN ON SHEET 2 OF 3
- L-50 = DENOTES LINE INFORMATION ON LINE TABLE SHOWN SHEETS 2 & 3 OF 3

SURVEYORS NOTES:

- There shall be no building or any other kind of construction or trees or shrubs placed on drainage easements.
- There shall be no building or other permanent structures placed on utility easements.
- There shall be no lot splits except to create larger lots.

